
SPRING 2024

WHEATLAND & AREA HOSPICE SOCIETY

The latest news and updates



A MESSAGE FROM OUR BOARD

With hope and hard work, anything is possible.

Our hospice and the new lodge are concrete evidence of the value we place on each other in our community. Our community truly cares and has shown through donations and volunteering that hospice is an important cause for them. It is about creating a new home yet about keeping our dying family a part of the larger community, a model that exceeds what has been offered by AHS in the many communities currently. Moreover, our hospice will be an example of regionalized decision-making, locally controlled access, and collaboration between multiple partnerships. Other hospice societies and experts in Alberta are watching us and cheering for our success. Thank you to everyone involved in this remarkable project.



@WheatlandHospice



@wheatlandhospice



wheatlandhospice.ca

COMMUNITY OUTREACH

Together We Are Better 

Palliative Navigators

Our volunteers and groups such as the PCN and FCSS/WFCSS help you connect the dots to better care. They provide help from the time of diagnosis right through to grief support.



Site of Informal Caregivers Seeking Assistance (2018)

Source: AHS PEOLC Health & Technology Assessment

	Urban	Rural
Family MD	40%	65%
ER Visits	13%	31%
Pharmacy Services	70%	95%

Anyone Who Stops Learning Is Old

PalliLearn/Covenant Care Facilitator Training.....October 1-30, 2023
AB Compassionate Communities Forum.....November 30, 2023
AHS Calgary Zone PCRT Quarterly Meetings.... November 30 & March 6
CHPCA Volunteer Training..... 2024 April 20



Community Presentations

Wow! By the end of May, over **100** of us will have attended this class. More dates will be announced soon. Develop confidence to support our family, friends, and community in their palliative journey.

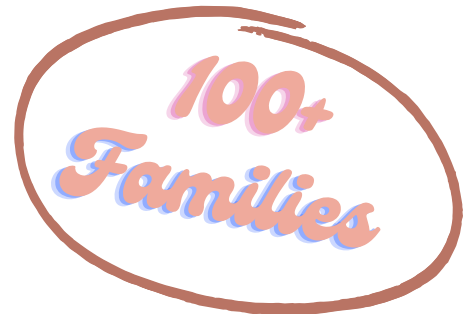


Bow Bench Quilters, Bridging the Gap, and Strathmore Happy Gang can now know how much palliative care can help friends and family.

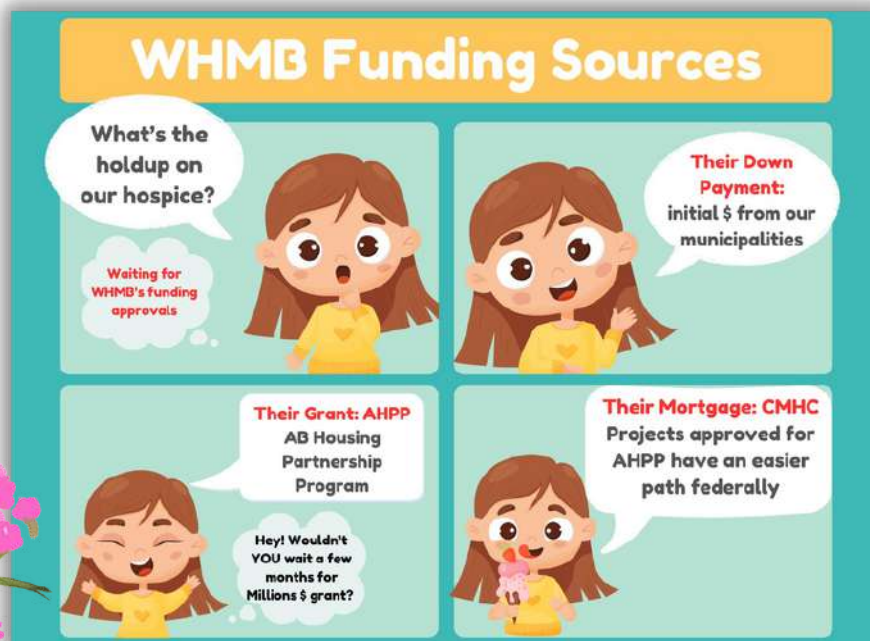
Next up: The Vault, May 15. Is your group interested in hosting a class? Contact us today at info@wheatlandhospice.ca.

Thank You

April 14–20 is National Volunteer Week. Let's celebrate our Bedside Respite and Navigators' impact during end-of-life. Their time, skills, and empathy are so vital to the well-being of our community. Thank you.



BUILDING OUR HOSPICE



BUILDING OUR HOSPICE

Building Together

Our hospice is designed not just for physical needs but also for social and spiritual aspects. It creates a community inside and helps maintain connections to the community outside. Support is provided for patients, family, friends, and caregivers.

Six resident rooms are designed to be large enough for excellent care and comfortable visits but small enough to not lose the feeling of home with soft lighting, appealing colours, and millwork trim. Each hospice room has an excellent view and access to outside patios facing Kinsmen Park. A larger bariatric room provides more space if needed. Ceiling-mounted lifts and separate sinks for staff are some of the many AB Health Small Care Home Design requirements provided.

Nursing input, both local and consultative, is incorporated into our hospice design in consideration of staff, patients, family, and caregivers. Over 8,000 sq. feet provide full hospice palliative care. In addition to patient rooms and clinical nursing areas, there are family quiet rooms, a spiritual room, a community gathering space with a kitchen and fireplace, a kids' play area, a volunteer room, a day hospice space, and even an area for our outreach programs. Specific design planning regarding furniture, fixtures, and equipment has now begun.

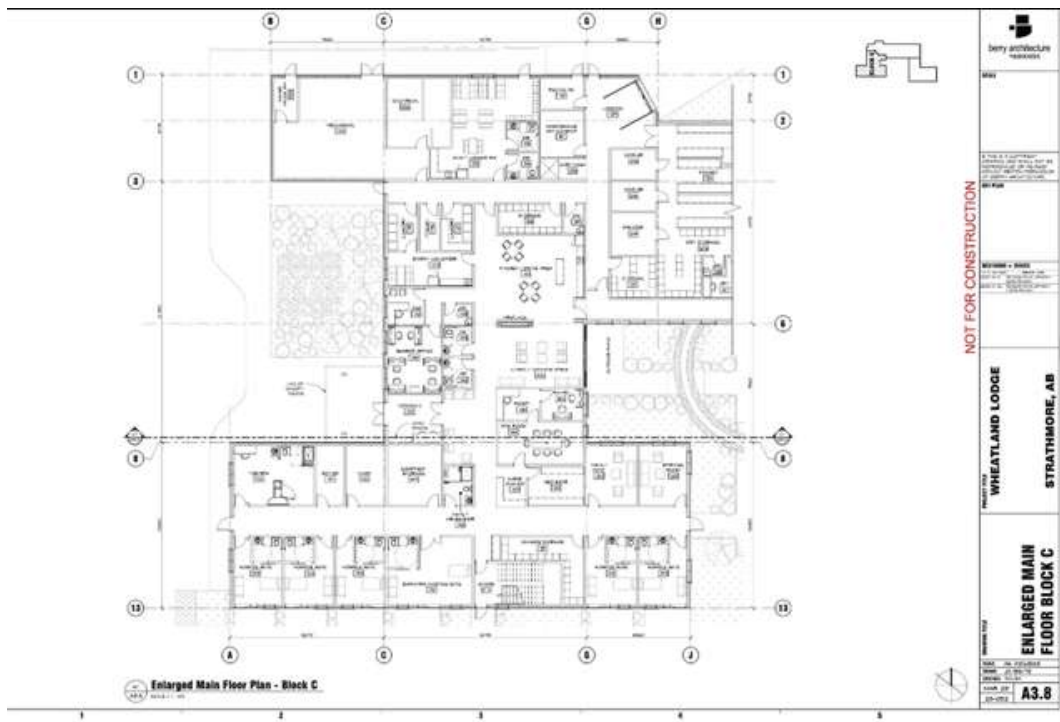
Our hospice is integrated with the new senior's lodge, allowing for significant operating cost savings with shared heating, HEPA ventilation, commercial kitchen facilities, security, administration, and security. Infection prevention and control will be at the provincial institutional level. Our build project is dependent on WHMB receiving its funding. The AHPP (Alberta Housing Partnership Program) grant announcement is (still!) pending, most likely due to the provincial budget and the new Community Care pillar developments. The AHPP contributes a significant amount of "free" grant money to WHMB, and both WAHS and WHMB believe the wait, even if it is until Fall 2024, is worthwhile. In the meantime, WHMB wants to proceed with future design and cost budgeting work, which are needed for the CMHC application. While it does come at some cost and risk, this forward-thinking will allow construction to begin quickly, possibly within two months following CMHC approval.

WAHS's Building Committee strongly believes its design meets our community's hospice palliative care needs. Multiple collaborative partnerships created by WAHS over the nearly past 10 years demonstrate both rural grassroots community development and sustainable community end-of-life care.

Check It Out!

Our hospice design and floor plan are the best! 6 patient rooms with clinical areas, lots of space for activities or quiet contemplation, and loads of room for volunteers, family, and friends to reach in and help out.

Our hospice is 8,000 sq feet, overlooks Kinsmen Lake, and is attached to WHMB's new lodge. Sharing common spaces and operating costs improves our bottom line



With Hope & Hard Work, Anything Is Possible.

WAHS and WHMB recently had a chili supper meeting. Topics of discussion included leadership and project management. We want to be full steam ahead with the build project. Looking for support from everyone!



When we care
Things happen



COLLABORATE. INNOVATE. ORCHESTRATE. AGITATE.

These past few months have seen us meeting with MLAs, councils, seniors groups, and Lions clubs so we can all be on board together.

Declining oil prices and a rapidly growing population create government budget concerns. The significant revision of AHS into 4 new pillars also makes forward planning and commitments difficult, but we're on it as best we can.



Thank You

Thank you to retiring board members Joanne Clark, Carley Flaws, and Randal Jarvis.

Welcome

Randi Collins, Ann McNair-Gariepy, and Susan Wenstrom.

The Need.

The Build.

The Cost.

2024
Community
Presentations

to discuss details of our 6 bed community hospice (located east of Kinsmen Park) in partnership with Wheatland Housing Management Body.

April 9	Rockyford
April 10	Hussar
April 12	Strathmore
April 15	Gleichen
April 16	Standard
April 17	Cheadle
April 22	Carseland
April 24	Lyalta

All meetings at 7 pm

COMMUNITY PRESENTATIONS

Revised information about **The Need, The Build, The Cost** will be available on our website soon.

We're sorry...

We promised a video walk-through of our hospice at our community presentations. The estimated cost was \$6,500, and we couldn't justify the expense.



FUNDRAISING

Farming for Hospice Report 2023

Wow! This year, **685 acres** were sold in support of crop inputs and our hospice build. A fairly good harvest, sale of bales, lots of hard workers, and irrigation from Nutrien helped net \$200,000+.

Total funds raised by Farming for Hospice 2024 was a **whopping \$425,000**. Fingers crossed for our winter rye, harvest pending in August!



Thanks to all the Sponsors and Friends in the Field.
Nothing big gets solved by one person.

Hospice Harvest Wrap-Up

See you in Fall 2024!

Wonderful atmosphere at the Legion, remarkable music by Drew Gregory and crew, and some of the best beef ever by Baldwin Catering. Oh, did we mention lots of cold beers !?!

Drew encouraged fans to buy acres, attracted two very large matching donations, and donated proceeds of ticket sales to WAHS. Drew is a fine example of putting your head down and doing the work that needs to be done.



HYPE!! For Hospice

Join us for our 7th annual Hike for Hospice. This year is bigger and better than ever with three events combined into one! Featuring special guests, entertainment, a fire truck pull, & more. Plus, win 18 bottles of high-end wine in the Hospice Wine Raffle. Give Hope. Have Fun. Find more details and tickets at www.wheatlandhospice.ca



HIKE FOR HOSPICE
7TH ANNUAL
Wheatland & Area Hospice Society

WHEATLAND & AREA
Hospice Society
Life and Death Matters

**Support our Hospice Build
at Kinsmen Park Today**

Hype !! for Hospice

3 Ways to Support:



HIKE FOR HOSPICE

Register or Donate in person or online!

FIRE TRUCK PULL

Chip in to your favourite team!

HOSPICE WINE RAFFLE

Buy a ticket online!

Hospice palliative care improves end of life care in our community.

May 5, 2024

11 am: Registration

12 pm: Welcome, Special Guests, and Hike

2 pm: Fire Truck Pull and Raffle Draw



New!
Wine Raffle
- The Best of Brunello
Only 100 chances
to win

www.wheatlandhospice.ca
for pledge sheets, donation links and raffle tickets

Help Us Reach Our Goal



Here's how you can contribute and show your support:

- ♥ **Make a donation:** Hype!! and Farming for Hospice, or any other time is very much appreciated.
- ♥ **Purchase raffle tickets:** Win big on our wine raffle, usually twice a year.
- ♥ **Partner with us:** Sponsor an event or do a third-party fundraiser!
- ♥ **Consider legacy giving:** Details on our website under Our fundraising/Ways to Give.
- ♥ **Spread the word:** Like and share our FB posts and talk to friends and family about our project. The more people who are aware, the greater our reach and impact.

OUT & ABOUT

Community Matters. You matter.

Palliative care...

- Addresses symptoms of living with serious illness, not just end-of-life.
- Starts at the time of diagnosis.
- Benefits patients of any age and their families and caregivers.
- Provides an extra layer of support along with other treatments.

Medicine Hat Lions C2 Conference on February 10



How Has Caregiving Affected You?



Time



Employment and
Work-Life Balance



Finances



Health and
Wellness: Mental,
Emotional, Physical
and Social



Personal
Relationships

Want to Make a Difference? Drop us a line at info@wheatlandhospice.ca, and let us know how you'd like to help improve rural palliative care.

Follow us on social media!



@WheatlandHospice



@wheatlandhospice



wheatlandhospice.ca