

---

SPRING 2023

---

# WHEATLAND & AREA HOSPICE SOCIETY

The latest news and updates



## A MESSAGE FROM OUR BOARD

*With hope and hard work, anything is possible.*

The spread of change happens most quickly through relationships and community-building than any other factor. We as a board see that collaboration with all levels of government, engagement with patients, their families, and care providers of all types, and innovation of new ideas and systems are essential to get our hospice built. We advocate a delicate balance of patience and urgency but with a subtle message to all: We need to stop relying solely on the compassion of individuals and instead build compassionate communities. Thank you to all who are playing a role with us.



@WheatlandHospice



@wheatlandhospice



[wheatlandhospice.ca](http://wheatlandhospice.ca)

# COMMUNITY OUTREACH

*Together We Are Better* 

## Bedside Respite Program

### Tech+Care

Need a pick-me-up? Need more info? Want to FaceTime with distant friends and family? We provide iPads, data, headphones, and an engaging volunteer to help.



### Learning by Heart

Volunteers recently discussed mobility aids and falls prevention with Carley F, RN. Karen H also led a great discussion on supporting change through conversation. We're so fortunate to learn from the best. Thanks ladies!

### The Waiting Room Revolution

Did you know this is the hottest podcast in palliative care? Check out Season 1 for the basics. The following seasons focus on specific diagnoses and conditions. We highly recommend it!



## Palliative Navigation

Stressed? Overwhelmed? Don't know which way to turn?

Add some tools to your toolbox. Referrals are accepted from you, family, friends, pharmacy, clergy, and healthcare providers.

Contact Diane at [navigator@wheatlandhospice.ca](mailto:navigator@wheatlandhospice.ca).



- Beside Respite volunteers
- Spiritual Care Practitioner study (NEW)
- Rural in-home funding assistance (up to \$10,000)
- Caring and compassionate community connections



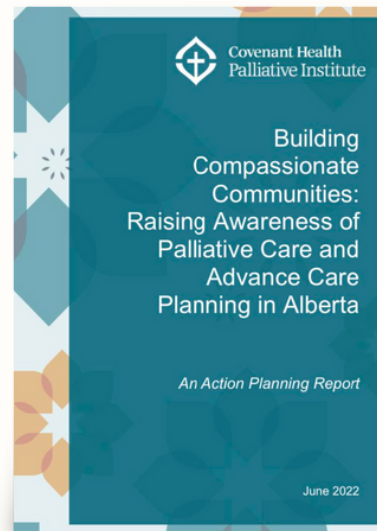
### Hey AHS Staff!

Fantastic learning! Our Strathmore Hospital nurses recently took part in Pallium's Learning Essential Approaches to Palliative Care (LEAP).

This program is offered to over 4000 AHS staff and is supported by AB Health and RhPAP to promote palliative principles in all facilities.

## Compassionate Communities

Recent studies say 95% of palliative care is done outside the medical system, by your hands. Future palliative care initiatives will emphasize services and support outside of hospitals. Dr. Martin LaBrie introduced Compassionate Communities during our U of C Needs Assessment in 2018. Check out the [Action Planning Report](#) based on his work across Alberta. Hospice societies play a vital role in this developing provincial framework.



## **BUILDING OUR HOSPICE**

WAHS Building Committee and WHMB are very pleased with consultant Derek Weiss's report outlining funding/financing options necessary for the new lodge build (Project Rationalization and Financing Development).

This report was presented to our municipal councils at the Wheatland Regional Partnership meeting in January and Wheatland County in February. The revised plan is a phased-in construction starting with 120 beds (new lodge build) and retention of 89 current beds. The hospice will be located within the new lodge build.

The total approximate cost is \$53M, of which our municipalities would be responsible for 12% as a down payment, and repayment of provincial and federal loans over a 50-year timeline.

The next steps include hiring a project manager to continue with design development, geotechnical and environmental updates, and, most importantly, funding submissions to the national and provincial programs, including letters of commitment by municipalities. This must be completed by the end of June. Project phases 2, 3, and 4 will continue through to the end of summer, and construction will then be possible.

We have posted FAQs and reports on our website under Who Are We/ Internal and External Reports.

### **Remember!**

Housing and community hospice care are significant, and it's not simple. Support our partnership with WHMB and their intensive well-planned funding proposal. Talk to your friends and family and local leaders to champion our projects.

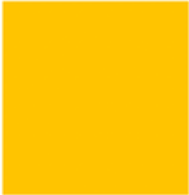
*Our hospice and new lodge are concrete evidence of the value we place on each other in our community.*



The Need.



The Build.



The Cost.



# Community Presentations

to discuss details of the new lodge build (east of Kinsmen Park) of which the hospice will be located.

**March 27** *Strathmore Library*

**March 29** *Cheadle Hall*

**March 30** *Rockyford Community Center*

**April 3** *Standard Community Center*

**April 4** *Carseland Community Center*

**April 5** *Gleichen Community Center*

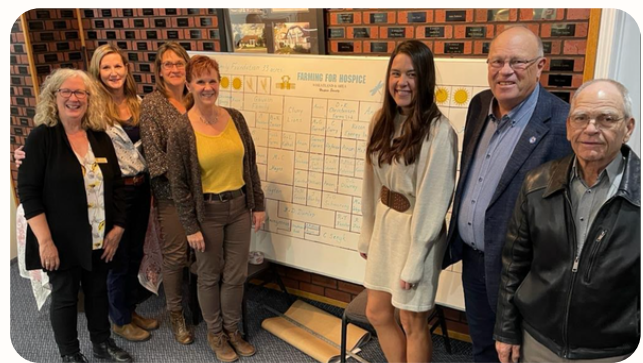
All meetings at 7 pm except Strathmore 7:30pm



# OUR FUNDRAISING

## Farming for Hospice 2022

Farming for Hospice 2022 was a fantastic success. Thanks to all who purchased acres, sponsors, suppliers, and those who worked in the field. Special thanks to Bruce Farms, who purchased our wheat crop for silage. And many ♥♥♥♥♥♥ to Drew Gregory for a fantastic Harvest Wrap-up Event, which topped up our bought acres even more!



## Hike for Hospice 2023

Join us on **May 7, 2023**, for our 6th annual Hike for Hospice.

New this year is a Charity FIRE TRUCK PULL!

More details coming soon.



**Did you know** more than 2,500 individual and corporate donations have been made to support our hospice build since 2015? Our community rocks!

## Our Current Fundraising Progress



## Living & Learning about Palliative Care

Check out our newest Dying2Learn lecture on April 21 at 7 pm at The Vault Cultural Collective. Invited guests include:

- Pansy Angevine, manager of Dulcina Hospice and past president of Alberta Hospice Palliative Care Association.
- Dr. Jim Hansen, founding member Foothills Country Hospice Society.



### Our Hospice - An Update

Learn about day to day hospice life. Hear how WAHS's plans are progressing. Get in on the latest news of our Build.

Pansy Angevine; RN Manager, Dulcina Hospice

Dr. Joni McNeely; Chair, WAHS

Dr. Jim Hansen; past Board, Foothills County Hospice

Keith Clayton; WAHS and WHMB Building Committees

**April 21 • 7 pm**

The Vault Cultural Collective

136 2nd Ave  
Strathmore  
(beside Value Drug Mart)

Registration is free, pick up tickets at the Vault.



**Compassionate Communities Engagement Session**

Learn more about how you can be involved with the Siksika Palliative Care Program

Wednesday, February 1, 2023  
at Siksika Health Services  
Multipurpose Room

Two sessions to fit your schedule:

- 12 PM - 1PM
- 5PM - 6PM

FOOD AND DOOR PRIZES!

RSVP BY CALLING SIKSIKA HOME CARE (403) 734-5695

**Congratulations** to Siksika Nation as they increase their community capacity in palliative care. A specially-trained team of nurses and other providers can help provide an extra layer of support during any stage of a serious illness. Contact Siksika Home Care.

## Resources & Information

### Canadian Virtual Hospice

- Resources and suggestions of all varieties

### Alberta Hospice Palliative Care Association

- Roadshow: online classes
- Grief Connection: telephone support
- Living Every Season: facilitated group format online

### Hospice Calgary

- Living with Illness and Grief: online or in-person counselling
- Peer Connection: telephone support
- Children's Grief Center
- Dying to Know Advance Illness Education

## We You!

Many hands make light work, and we're so appreciative of our community members that contribute each in their own meaningful way.



Darlene is a busy gal who divides her time with WAHS, Strathmore Historical Society, and The Vault Cultural Collective. She's one of two board members that keep us organized and our communications flowing.

Many of you know Jody. We're grateful for the slick graphics she designs for our tickets, posters, and promotional products.



**Want to Make a Difference?** Drop us a line at [info@wheatlandhospice.ca](mailto:info@wheatlandhospice.ca), and let us know how you'd like to help improve rural palliative care.



@WheatlandHospice



@wheatlandhospice



[wheatlandhospice.ca](http://wheatlandhospice.ca)